

---

# 2016 Maurie Pawsey Scholarship

TEFMA

---

Nicole Eaton  
September 2017

# Contents

1. Thank you
2. Acknowledgements
3. Overall Key Observations
4. University of Helsinki
5. Universities of the United Kingdom
6. Coventry University
7. University of Chicago
8. APPA
9. Microsoft
10. Amazon
11. LinkedIn
12. Questions

# Thank you



# Acknowledgements

LinkedIn



THE UNIVERSITY OF  
CHICAGO

amazon



Loughborough  
University

APPA

UCL



Microsoft



UNIVERSITY OF  
OXFORD



UNIVERSITY OF HELSINKI

RMIT  
UNIVERSITY



University of  
Nottingham  
UK | CHINA | MALAYSIA

Coventry  
University



## Overall Key Observations

- How lucky students at Australian Universities are.
- Challenges are the same no matter the corner of the globe you are from.
- UK delegates space and campus planning decisions to committees.
- USA FM departments have a real understanding of what they do and how they support the success of the University.





# University of Helsinki

University of Helsinki  
(parent group)

Helsinki University  
Properties Ltd

University of Helsinki  
Property Services Ltd



National Library, 1845

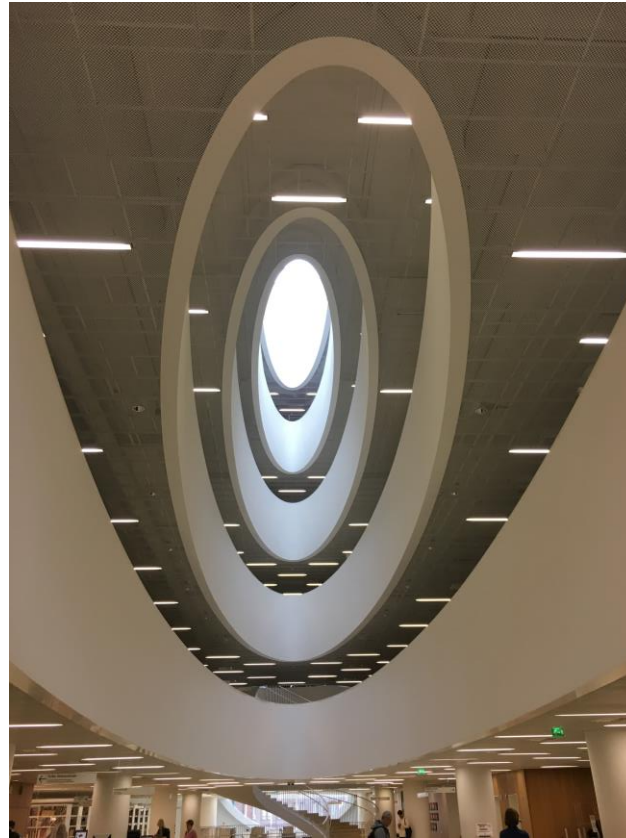


National Library, Locker Room

# University of Helsinki



Uni of Helsinki Main Building



University of Helsinki, Library





# University of Helsinki



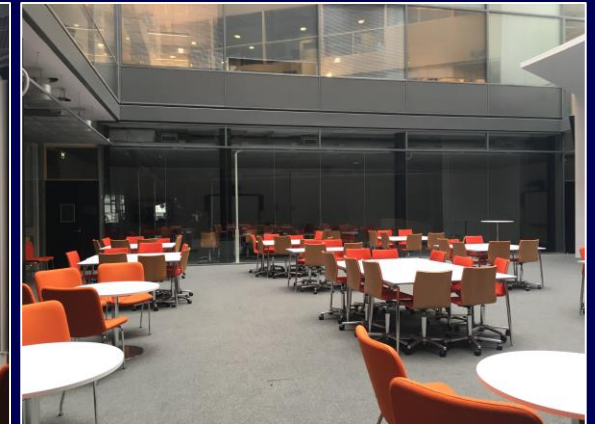
Think Corner



Think Corner



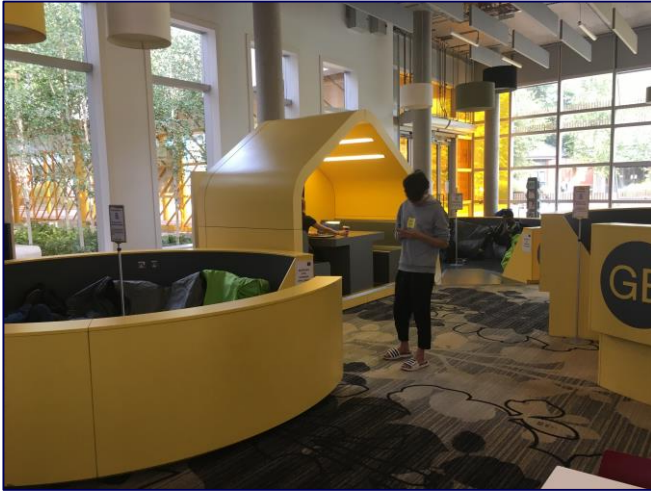
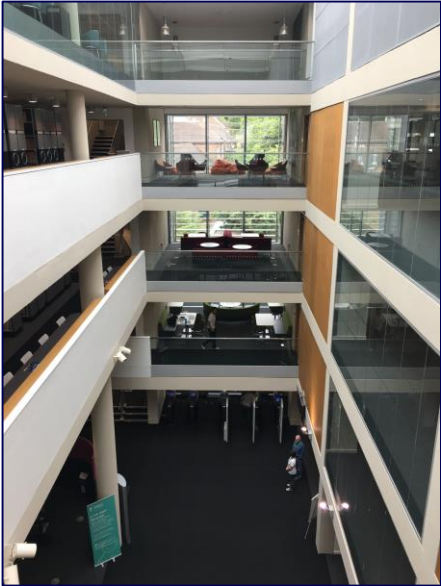
Seminar Space, Education



Seminar Space, Education



# Universities of the United Kingdom



## Libraries









# University of Chicago

The Facilities Management group has set themselves the target of receiving the APPA Award for Excellence in 2020. They want to be recognised as pre-eminent in FM as the University is in academia and has developed an outward mindset to engage, improve and share.



Edward H Levi Hall, connecting to the Main Quad



Joe and Rika Mansueto Library



## Summer 2017 Campus Projects

Last update: 5/31/2017



### Legend

- Interior Project
- Exterior Project
- Interior and Exterior Project
- Facade Improvements - main-quad buildings
- Vault/Tunnel & Hatch repairs
- Landscape Projects and Signage

### Campus Accessibility Notice

Ongoing construction projects or street repairs may temporarily limit accessibility. The University encourages you to review the status of University construction projects at the [Facilities Services Campus Plan and Construction site](http://facilities.uchicago.edu/construction/).  
 (http://facilities.uchicago.edu/construction/)  
 Should you have any questions, concerns, or suggestions for improving accessibility on any of the routes, please contact Facilities Services at (773) 834 1414.

### Project List

- |   |   |
|---|---|
| <p>1) 59th and Woodlawn Tunnel<br/>PM: Daniel Albo<br/>Schedule: 7/15/17 to 8/25/17</p> <p>2) Levi Hall-elevator replacement<br/>PM: Richard Wigley<br/>Schedule: 6/12 to 9/29</p> <p>3) PSD interior project-Kent<br/>PM: Tom Deal<br/>Schedule: 7/1/17 to 12/31/17</p> <p>4) PSD interior projects-Kersten and Hinds<br/>PM: John Barkow<br/>Schedule: 6/12/17 to 9/15/17</p> <p>5) Eckhart Roof Replacement<br/>PM: Barry O'Quinn<br/>Schedule: 6/12/17 to 9/15/17</p> <p>6) McGiffert House-Phase 2<br/>PM: Richard Wigley<br/>Schedule: 6/12/17 to 11/3/17</p> <p>7) Stevanovich Institute on the Formation of Knowledge (SIFK)<br/>PM: C. Lee<br/>Schedule: ongoing through 8/31/17</p> <p>8) Charter Schools<br/>PM: Michael Ross<br/>Schedule: ongoing through 12/31/17</p> <p>9) Keller Center (not shown on map)<br/>PM: Angela Knoble<br/>Schedule: 4/3/17 through 12/1/18</p> <p>10) HVAC and plumbing projects: Cobb, Classics, Jones, Hinds, IN, Regenstein<br/>PM: Dan De Young<br/>Schedule: spring and summer 2017</p> <p>11) LASR Renovation &amp; Expansion<br/>PM: Dan DeYoung<br/>Schedule: ongoing through 8/31/17</p> <p>12) LASR landscape<br/>PM: Kathleen Golomb<br/>Schedule: summer 2017</p> <p>13) Crear Library<br/>PM: Jen Robles<br/>Schedule: Demolition begins March 2017; construction through Sept. 2018</p> <p>14) Main Quad paver replacement<br/>PM: Denise Davis<br/>Schedule: 6/12/17 through 9/15/17</p> <p>15) Rollard removal: Cobb/Abbott/SBth and University (east and west)<br/>PM: Denise Davis<br/>Schedule: 6/12/17 through 9/15/17</p> <p>16) Crown Field House-tuckpointing<br/>PM: John Barkow<br/>Schedule: summer 2017</p> <p>17) Kovler-renovation<br/>PM: Tom Deal<br/>Schedule: early summer through May 2018</p> | <p>18) Electrical Upgrades<br/>PM: Jim Garcia<br/>Schedule: 6/12/17 to 9/15/17</p> <p>19) International House tower façade repairs<br/>PM: Barry O'Quinn<br/>Schedule: 6/12/17 to 9/15/17</p> <p>20) Jones chilled water upgrades<br/>PM: Tom Deal<br/>Schedule: spring to mid-summer</p> <p>21) Reynolds Mechanical<br/>PM: Tom Deal<br/>Schedule: spring to mid-summer</p> <p>22) ERC-lab renovations in various spaces<br/>PM: Tom Deal<br/>Schedule: summer 2017</p> <p>23) Searle-IME interior updates<br/>PM: Tom Deal<br/>Schedule: summer 2017</p> <p>24) Oskiers façade repairs<br/>PM: Barry O'Quinn<br/>Schedule: 6/12/17 to 9/15/17</p> <p>25) Burton Judson-restroom upgrades (not shown on map)<br/>PM: Kareem Couzar<br/>Schedule: 6/12/17 to 9/15/17</p> <p>26) Max Palevsky rescarpet<br/>PM: Kareem Couzar<br/>Schedule: 8/14/17 through 9/8/17</p> <p>27) Fire alarm upgrades at Reynolds Club, Ida Noyes and Henry Crown<br/>PM: Denise Davis<br/>Schedule: summer 2017</p> <p>28) Rosenwald interior renovations<br/>PM: Jim Garcia<br/>Schedule: July 2017</p> <p>29) Saksh Hall<br/>PM: Denise Davis<br/>Schedule: July 2017</p> <p>30) Ryerson Hall<br/>PM: Barry O'Quinn<br/>Schedule: 6/12/17 to 9/15/17</p> <p>31) Reynolds Club-Dining-Pret a Manger build-out<br/>PM: TBD<br/>Schedule: 6/12/17 to 9/15/17</p> |
|---|---|

### As Indicated on Map

- Vault and Tunnel and hatch repairs at various locations  
PM: Daniel Albo  
Schedule: Summer 2017 ●
- Facade repairs (phase 2 of 2) Bookstore, Cobb, Stuart, Rosenwald, OI  
PM: Barry O'Quinn  
Schedule: 6/12 to 9/15 ●
- Landscape Projects  
PM: Kathleen Golomb  
Schedule: Summer 2017 ●

## APPA San Francisco

APPA are focused on providing excellence in today's educational environment, and trained on adapting, enhancing, and transforming the facilities of the future.

The conference provided:

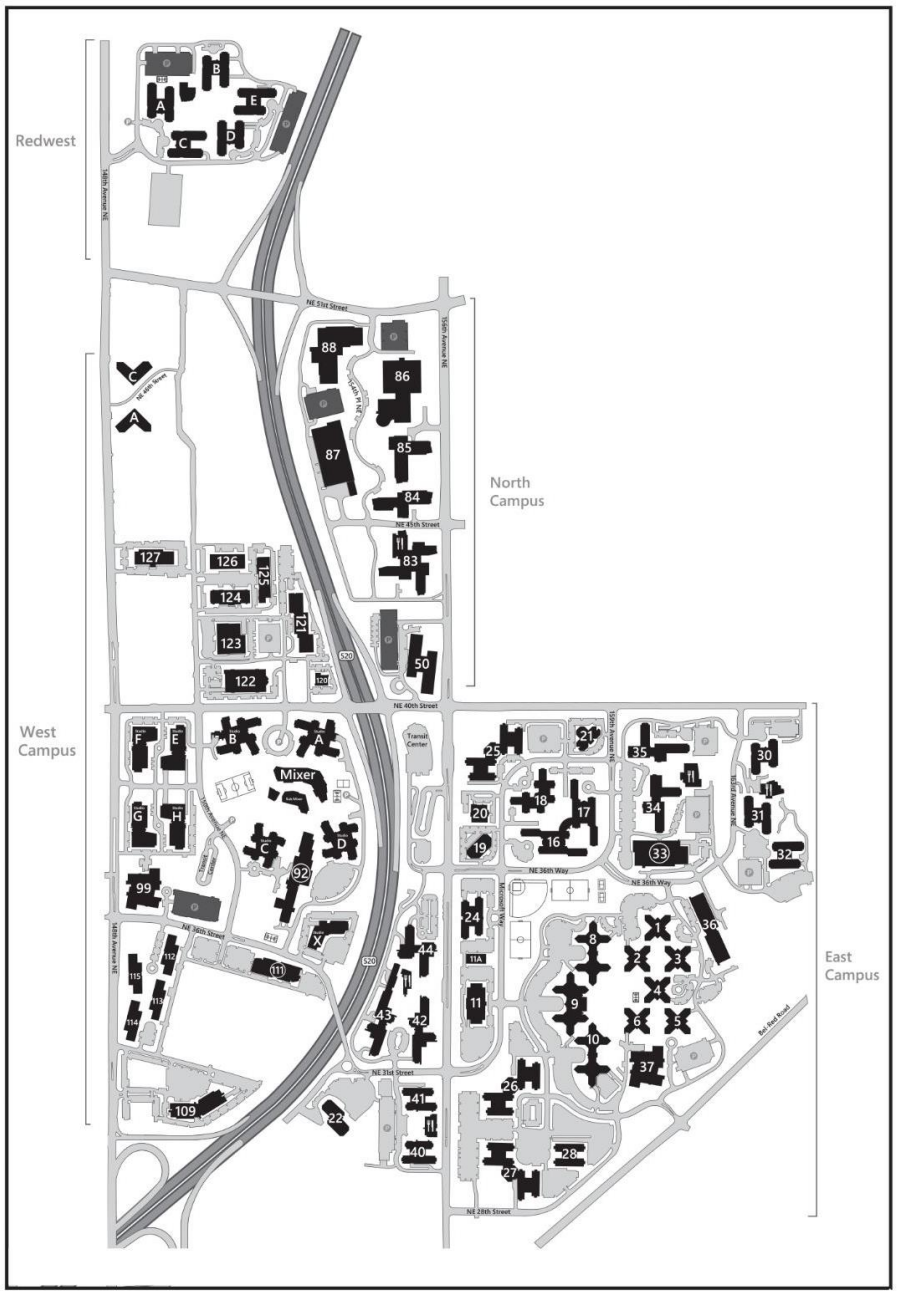
- Thought provoking key note addresses on Leadership and Change, Big Data Analytics, and Transforming for Student Success.
- Workshops:
  - Montana University using a sandbox approach to transform classrooms into Active Learning Spaces.
  - Oklahoma State University growing by 1,200 students and introducing interdisciplinary learning for Arch, Eng. And Technology.
  - Facilities GIS, a review of 7 universities and how location based technologies are utilised.



Me @ the APPA Exhibition Hall



# Microsoft Redmond Campus





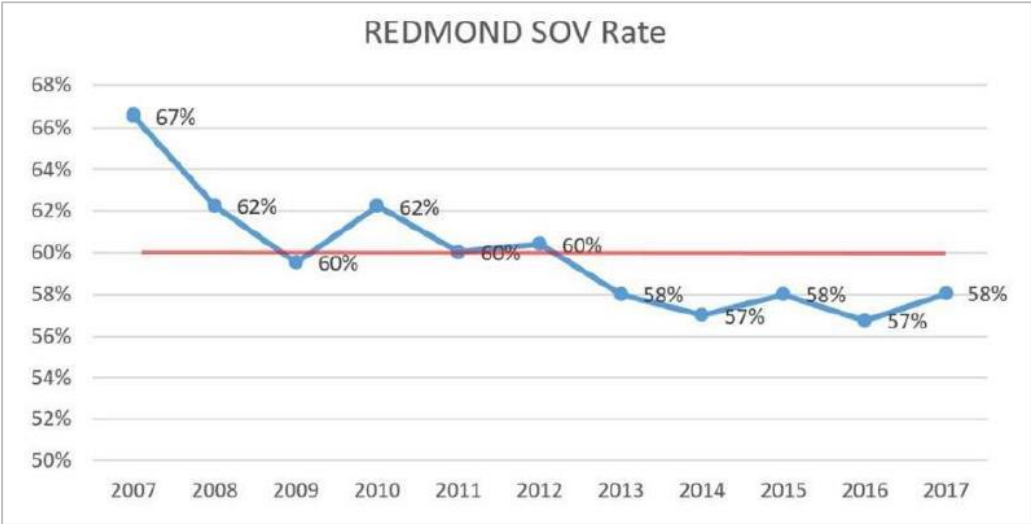
# Microsoft Commute Services



65,000 commuters

50% live 5 miles or less

25% live in Seattle



Connector

Trips **3.9M+**

Daily **~3,400**

Routes **22**

# buses **90**

Shuttle

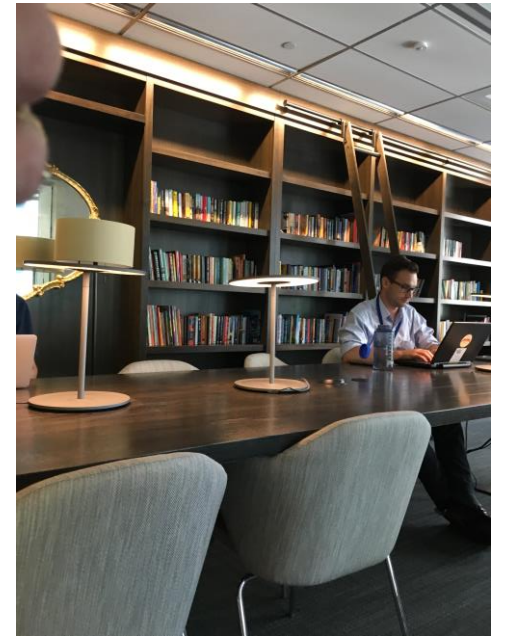
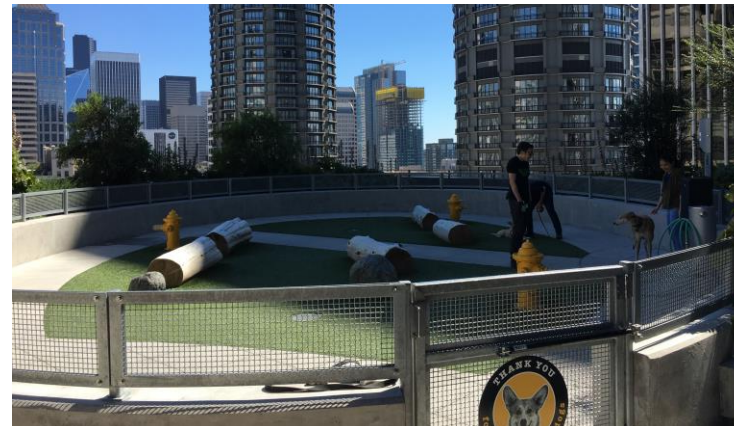
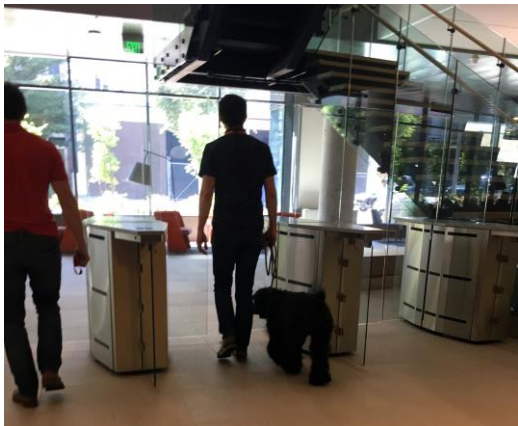
Vehicles **213**

Riders **~7K/day**

Wait time **~5mins**

Journey **~11mins**

# Amazon Seattle Campus





# LinkedIn Sunnyvale Campus







Nicole Eaton  
Associate Director, Planning and Asset Utilisation  
RMIT University  
[Nicole.Eaton@rmit.edu.au](mailto:Nicole.Eaton@rmit.edu.au)